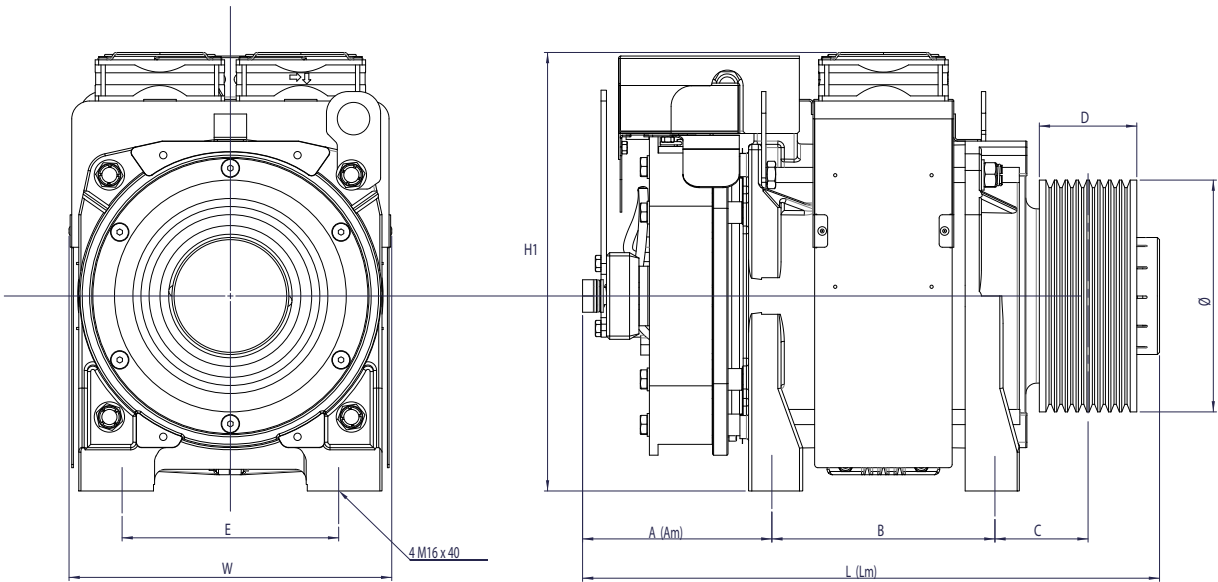




G-200 - T1									
	Senza ventole di raffreddamento <i>Without cooling fans</i>					Con ventole di raffreddamento <i>With cooling fans</i>			
Carico statico <i>Static load</i> [kg]	1600					1600			
Coppia / <i>Rated torque</i>	190 Nm					230 Nm			
Peso / <i>Weight</i> [kg]	122 kg					134 kg			
Gamma velocità cabina <i>Range of cabin speed</i> [m/s]	0.63 - 1.60								
Portata / <i>Duty load</i> [kg]	225	320	400	450	480	320	400	630	800
Tiro / <i>Suspension</i>	1/1	2/1	2/1	2/1	2/1	1/1		2/1	
Gamma Ø pulegge <i>Range sheave Ø</i> [mm]	210					160 - 210	160	160 - 210	160
Max combinazione funi <i>Max ropes combination</i>	n°8 Ø 6/6.5/6.7mm								

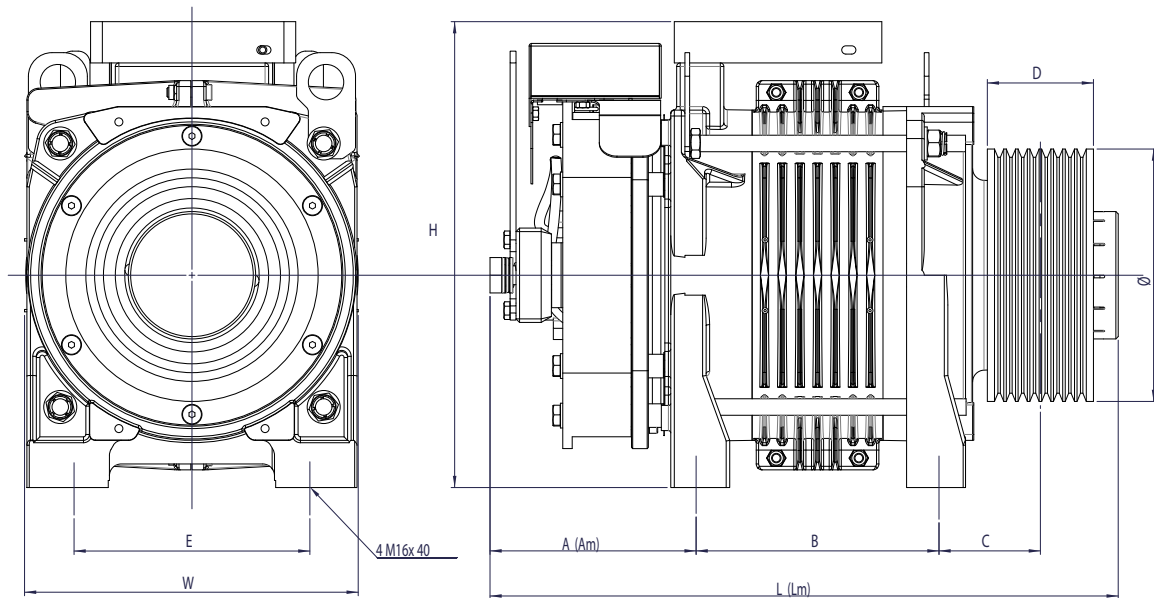
G-200 - T1 CON VENTILATORI / WITH COOLING FANS



TYPE	A	L	Am	Lm	B	C	E	W	H1	D	Ø
G-200 T1	147	505	175	533	206	86	200	300	405	90	160 - 210 - 240

Am | **Lm**
= quote con manovra
apertura a mano
= dimensions with lever
for hand release
= Abmessungen mit Hebel
für Nothandlüftung

G-200 - T1 SENZA VENTILATORI / WITHOUT COOLING FANS



TYPE	A	L	Am	Lm	B	C	E	W	H	D	Ø
G-200 T1	147	505	175	533	206	86	200	283	395	90	160 - 210 - 240